

## Single Phase Cleaning: Enhance No. 567

Are you aware that Hydrite has a caustic additive that can reduce or eliminate the need for acid cleaning and associated rinse steps?

**Enhance No. 567** is a concentrated caustic additive that “enhances” the cleaning effectiveness of caustic solutions, especially in hard water. It potentially allows for lower caustic cleaning concentrations and the reduction or elimination of acid washing of low to moderate temperature processing equipment. It also helps control excessive foam formation and aids in rinsing. When used at higher concentrations, it can allow for single phase cleaning (elimination of acid washing) of high heat equipment.

### Typical Use Rates (to enhance the effectiveness of a caustic cleaning solutions)

High Heat Equipment CIP's (Evaporators, Separators, HTSTs):

- Add 1.0 to 1.5 fluid ounces per gallon of caustic cleaning solution (1950 - 2925 ppm chelation)

Moderately Hot Processing Equipment:

- Add 0.5 to 1.0 fluid ounces per gallon of caustic cleaning solution (975 - 1950 ppm chelation)

Single Phase Cleaning of High Heat Equipment (Evaporators, Separators, and HTSTs):

- Add 1.5 to 3.0 fluid ounces per gallon of caustic cleaning solution (3000 - 6000 ppm chelation)

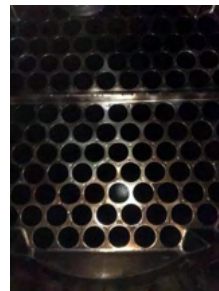
### Additional Product Considerations

- Enhance No. 567 **should not** be used to clean excessive mineral deposits such as those found in a whey UF permeate evaporator—CIP acid is better suited for this application.
- Enhance No. 567 **should not** be used to boost caustic solutions that contain chlorine. Chlorine bleach and some of the components found in Enhance do not have a high degree of compatibility.
- Consult a member of Hydrite's RITE Team for specific product usage recommendations.

### Case Study

Below are pictures of a skim milk evaporator tube chest after a single-phase wash was completed with Enhance No. 567 over a 7-day trial.

- **CIP Time Saved:** 1 hour and 20 minutes
- **Water Saved:** 1 million gallons/year



Top of Skim Milk  
Evaporator Tube Chest



Bottom of Skim Milk  
Evaporator Tube Chest

Reach out to the **RITE team** for more information on Enhance No. 567.